



RENTAL CONDITIONS: REF MUNTANER CUBI



REF MUNTANER CUBI Entresuelo-2 and Storage 381m2

Net monthly rent: 4,129 €

- IBI: 224,39 € Monthly
- Community expenses: 205,31 € Monthly
- Air Con: 26,24 € Monthly (Maintenance)

Total cost per month: 4,584.94 €

Legal security deposit: 1 month rent

Additional warranty: 6 months bank's endorsement

Agency fee: 10% annual rent + VAT

REF MUNTANER CUBI 1-1 and storage 338m2

Net monthly rent: 4.502 €

- IBI: 224,39 €
- Community expenses: 205,31€
- Air con: 26,24€
- Total cost per month: 4.957,94€

Legal security deposit: 1 month rent

Additional warranty: 6 months bank's endorsement

Agency fee: 10% annual rent + VAT

LOCATION

Spain / Barcelona / Barcelona city / Sant Gervasi / Muntaner

PROPERTY TYPE

5 bedroom apartment
3 bathrooms
storage room

FEATURES

Possibility of parking not in the same building
ITP government tax not included (0.5%)

Contact us today for more information or to arrange a viewing

+34 933 682 107 - info@chicroomproperties.com - www.chicroomproperties.com



REF MUNTANER CUBI 5-1 and Storage 334m2

Net monthly rent: 4,808 €

- IBI: 224,39 €
- Community expenses: 205,31 €
- Air Con: 26,24 €

Total cost per month: 5,263.94 €

Security deposit: 1 month rent

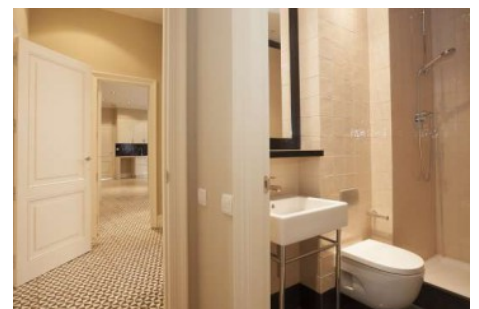
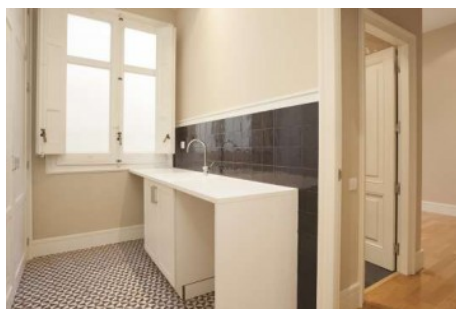
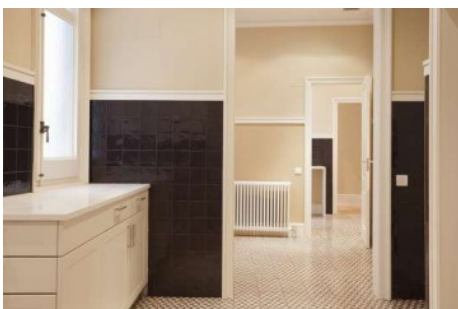
Additional warranty: 6 months bank's endorsement

Agency fee: 10% annual rent + VAT

See more information about this property on our website.

Contact us today for more information or to arrange a viewing

+34 933 682 107 - info@chicroomproperties.com - www.chicroomproperties.com



1. Particulars: Any property particulars are not an offer or contract, nor part of one. You should not rely on statements by Chicroom Barcelona in the particulars or by word of mouth or in writing ("information") as being factually accurate about the property, its condition or its value. Neither Chicroom Barcelona nor any associated agent has any authority to make any representations about the property, and accordingly any information given is entirely without responsibility on the part of the agents, seller(s) or lessor(s). Prior to the signature of any document concerning the property we recommend that all purchasers consult an independent lawyer and if necessary carry out a survey of the property to ascertain condition / measurements. 2. Photos etc: The photographs show only certain parts of the property as they appeared at the time they were taken. Areas, measurements and distances given are approximate only and should be checked by the purchaser. Any computer generated image gives only an indication as to how the property may look and this may change at any time. 3. Regulations etc: Any reference to alterations to, or use of, any part of the property does not mean that any necessary planning, building regulations or other consent has been obtained. A buyer or lessee must find out by inspection or in other ways that these matters have been properly dealt with and that all information is correct. 4. VAT: The VAT position relating to the property may change without notice. 5. Information on the web-site about a property is liable to be changed at any time.

Contact us today for more information or to arrange a viewing
+34 933 682 107 - info@chicroomproperties.com - www.chicroomproperties.com