



## 1 bedroom flat to let Eixample



Fantastic cosy apartment of 50m2 with all the comfort. This is 1 bedroom flat to let in Eixample. It counts with one double en suite bedroom. The bedroom is very bright and receives plenty of natural light. As well as does the kitchen that is equipped with cupboards, but not with the appliances. The living room is about 20m2 and has built in wardrobe. The apartment comes unfurnished. It's equipped with air conditioning and heating in one and also radiators gas heating. The apartment is orientated toward the south and therefore receives sun and natural light during the whole day long.

There is an option of parking in the same building for an additional 120 €. This apartment is ideal for one person or a couple.

This property is in Eixample Dreta neighborhood, residential part of the city, which is very pleasant and where many stores can be found. The closest metro station will be Monumental (purple line) and Sagrada Familia (purple and blue line). Don't miss to visit this fantastic opportunity. Great value for money.

LOCATION

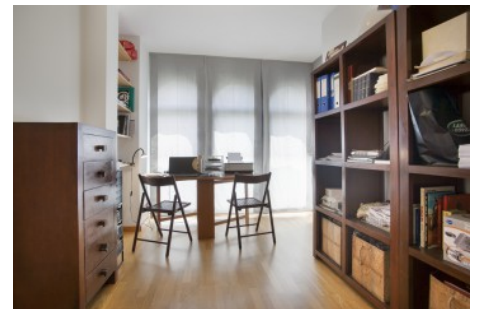
PROPERTY TYPE

FEATURES

**See more information about this property on our website.**

Contact us today for more information or to arrange a viewing

+34 933 682 107 - [info@chicroomproperties.com](mailto:info@chicroomproperties.com) - [www.chicroomproperties.com](http://www.chicroomproperties.com)



1. Particulars: Any property particulars are not an offer or contract, nor part of one. You should not rely on statements by Chicroom Barcelona in the particulars or by word of mouth or in writing ("information") as being factually accurate about the property, its condition or its value. Neither Chicroom Barcelona nor any associated agent has any authority to make any representations about the property, and accordingly any information given is entirely without responsibility on the part of the agents, seller(s) or lessor(s). Prior to the signature of any document concerning the property we recommend that all purchasers consult an independent lawyer and if necessary carry out a survey of the property to ascertain condition / measurements. 2. Photos etc: The photographs show only certain parts of the property as they appeared at the time they were taken. Areas, measurements and distances given are approximate only and should be checked by the purchaser. Any computer generated image gives only an indication as to how the property may look and this may change at any time. 3. Regulations etc: Any reference to alterations to, or use of, any part of the property does not mean that any necessary planning, building regulations or other consent has been obtained. A buyer or lessee must find out by inspection or in other ways that these matters have been properly dealt with and that all information is correct. 4. VAT: The VAT position relating to the property may change without notice. 5. Information on the web-site about a property is liable to be changed at any time.